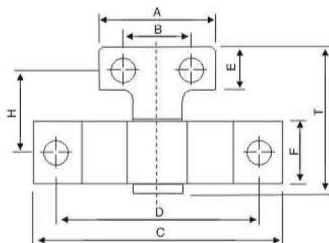


鎖模扣 DTP03A Latch lock



利用簡單之構造，可使用模具完全打開與密合，且裝置簡單互換性高。本裝置最適合三模板之針點射出，有拉斷料頭與脫模一次完全之功能。且採用高級合金鋼熱處理後研磨而成，採用進口彈簧，品質可靠。

With a simple structure, can use the mold completely open and closed, and the device is simple with high interchangeability. The device is most suitable for pin point injection has snapped three template material and release a fully functional. And the use of high-grade alloy steel after heat treatment and grinding, imported spring, reliable quality.

Type	尺寸Size									拉力(Kgf)	單價 ¥ Unit price
	A	B	C	D	E	F	H	T	孔⊕		
DPT03A	40	26	72	60	20	20	23	49	M8	250	
DPT03B	36	22					66	96			
DPT03C	50	30	113	90	22	30	38	73	M10	300	
DPT03D							79	118			
DPT03E							38	73	M12	400	
DPT03F	25	103	135								



Order: Type No. x Pcs
DPT03A x 10